

**RIVERSIDE
ARTISTS
GROUP**

**POLISH SOCIAL & CULTURAL ASSOCIATION
3 – 14 NOVEMBER 2024**

ANNUAL24

RAG ANNUAL 24

Riverside Artists Group's (RAG) annual exhibition, for the second year at the Polish Centre (POSK), Hammersmith, London, presents work from 33 artists.

It's a stunning collection that reflects the way each practitioner works juxtaposed against the style or discipline of other members. Self-selected and without theme, the images give a broader appreciation of the current concerns of each artist.

Following our successful 'Borders' exhibition in 2023, also at POSK, this year we host an 'Artists' Saturday Talk' where all are welcome to contribute to a discussion of the works featured.

RAG shows are always visually exciting and thought provoking. Once again designed and hung by RAG member John Potter (ex-RA exhibitions), there are framed works, canvases, assemblage, combined media and sculpture available for purchase. Please contact the artists directly, details in the listings that follow.



Mike Abrahams

DREAM/SPACE/ABOVE £900
acrylic, house paint, digital prints on canvas, triptych 142 x 60 x 3.5cm

I don't know why art isn't on the ceiling anymore? This is one of a series of new text based triptychs that can be arranged in any order and installed on the wall and ceiling, or on the floor and wall.

mike@abrahams.uk.com



Susan Bazin

SPRING PRESENCE £400
acrylic and oilbar on canvas
70 x 50cm

Absences/Presences: wondering if permanent absence can become presence. Some see, hear, feel them. Are they somewhere, anywhere, nowhere? Does the physical become ethereal? So many different beliefs...

susan@bazin5.com



E. Lynne Beel

HOPE £550
giclée print, 50 x 35cm

However dreary that outside view of a scene may be, the fact that there's been a radical change within its colour scheme tends to mean that it's still worth perusing...

minarette2000@yahoo.co.uk



Peter Blegvad
CAT'S CRADLE £700
mixed media collage on wood panel
57 x 60cm

I often think of Joseph Cornell.
peterblegvad@btinternet.com



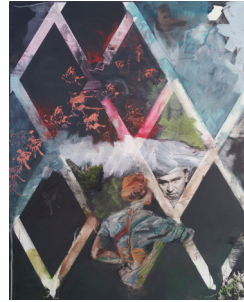
Natalia Bobrova
ISABELLA PLANTATION £600
oil on canvas, 68 x 88cm

This impressionistic painting was inspired by rhododendron blossoms in Richmond Park, London.
nbobrova@hotmail.com



Joanna Brendon MBE
SUMMERFIELD 1 £290
mixed media, 22 x 30cm

All my art is landscape-based and to varying degrees of abstraction. I try to capture the experience of being there rather than representing the topographical detail. The horizon may be shifted, the plane tilted, but there is always a clue to the source.
jbrendon@me.com



G. Calvert
NARRATIVES £POA
mixed media on canvas, 120 x 100cm

A black and white diamond grid appeared like a gift to me. It could express the confines of narratives. To begin with, it remained divided by a classic film image and a cloud of white paint. Over time, other elements suggested themselves utilising films, painting and found images that produced another kind of narrative.
g@calvert.com



Jim Cox
ALIZARIN JAR £275
oil on board, 28 x 32cm

Celebration of Alizarin Crimson.
jimcox1912@gmail.com



Grazyna Cydzik
DISPLACED £385
photogram under UV light on watercolour paper painted with photo emulsion
23.5 x 27.5cm

This image is part of an ongoing series from the Thames foreshore. It is seaweed exposed.
grazynacydzik@icloud.com



Emma Davis

SIDEWAYS £350

graphite on paper, framed 20 x 28 x 5cm

I like the odd angle of this portrait, the slide of the face.

emmadaavisart@gmail.com



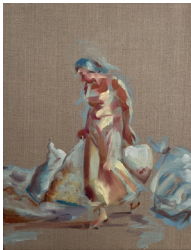
Brian Deighton

MONUMENT £400

oil pastel and acrylic on canvas, 117 x 60cm

I found myself repeatedly painting this motif during the Covid pandemic. It stands for a human being. I made this for my younger brother but I also see it as a monument for all the people who are currently dying before their time.

briandeighton@me.com



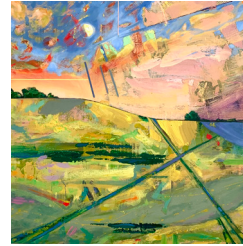
Josie Deighton

TAKING OUT THE BAGGAGE I £95

oil on linen, 35 x 27cm

Works developed during Passaggi Atina Residency in Italy, August 2024 and form part of a larger series around emotional baggage: emerging from under, running from, playing with, embracing, accepting and living with the detritus.

jsdeighton@gmail.com



Shona Elrick

NORTHERN SUMMER EVENING

WITH MOON £850

oil and collage on canvas, 60 x 60 x 4cm

Inspired by a walk around our family's farm in Aberdeenshire in late summer. Returning through a wheat field I loved the way two sets of vehicle tracks created a cross of parallel lines. Still light at 10pm, a moon rose.

shonaelrick@googlemail.com



Chloe Fremantle

WHERE ARE YOU? F28 £750

mixed media on canvas, 40 x 40cm

In these mixed media works the collaged fabric lines indicate possible routes, form relationships and create an energy. Representative of our own lives, as we randomly move through time, we are but an integral part of a greater whole.

chloefremantle@mac.com



Máire Gartland

ORANGE MOON £400

oil on canvas with gold leaf, 30 x 30cm

I seem to be travelling into the country of lost time. Images from childhood, vaguely remembered, are making their way into my work. It is not a retreat but a meditation.

And there is always a connection with the present, emotional perhaps but real too.

mairegartland@hotmail.co.uk



Saadeh-Byreet George
DANSE MACABRE I £POA
mixed media on wood panel, 84 x 60cm

Our planet is boiling, Our humanity frozen.
Bombarded with images of horror and
Destruction, every day, on every screen,
we dare not bear witness.
Pillars of salt we stand helpless.
Children trapped under hellish stones,
fire and woe; as mothers' nipples weep
blood and sorrow.
saadehgeorgegeorge@gmail.com



Martin Ireland
STORM CLOUDS, WEST SUFFOLK #1 £650
oil on canvas, 41 x 51 cm

I visit regularly the borders of Suffolk and
Essex between Wivenhoe and Woodbridge,
visiting friends. The countryside is flat and
presents big skies like those in the paintings of
Constable and Dutch masters. I'm fascinated by
the way big skies dance together in
harmony at the whim of unseen forces.
martinireland65@yahoo.co.uk



Sarah Granville
LAND 2 (detail) £360
etching with spitbite and aquatint, 7/10 VE
framed 37 x 65cm

A series of spitbite and sugarlift etchings
derived from recent sketchbook landscape
drawings on the subject of passing through.
sg@sarahgranville.com



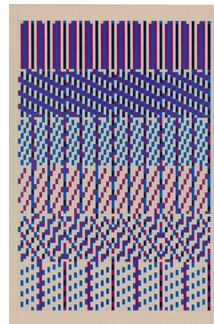
Buffy Kimm
POLES APART £750
multi-plate etching with aquatint, 83 x 83cm

This print was created using 56 different
etching plates. The inspiration came from a
photograph of scaffolding poles on a pallet.
The print represents the poles, end on, and is
one of two as it was so difficult to find a press
big enough to create a single print.
buffykimm@hotmail.com



Janey Hagger
SURPRISE £750
oil on canvas, 100 x 76cm

I was working in a small wood when a
young woman, all dressed in white, riding a
white scooter sped through. I surprised
her, and she me.
janey@janeyhagger.co.uk



James Lawson
COUNTING GRID ECHO 16 £1500
acrylic, coloured pencil, clear gesso
on canvas, 120 x 80cm

Two identical sequences, one blue, one
magenta, are superimposed but start at
different points like in a musical 'round'
or 'canon'. A third colour is created where
the two patterns coincide. I am fascinated
by sequences where change rather
repetition is fundamental, like in minimal
or process music.
jamesplawson@gmail.com



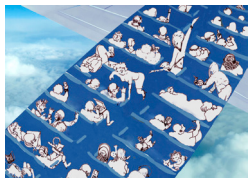
Seil Lien
WILD SHORES £300
oil on card, 24 x 20.3cm

This painting reveals the chaotic beauty of a wild sea meeting the shore and symbolises life's dualities – order and disorder, struggle and peace. Through the turbulent energy and vivid contrasts, viewers are invited to find strength and inspiration in life's unpredictability.
seillienart@gmail.com



Marianne Moore
PEACE £280
watercolour, 29.7 x 21 cm

This year, I intentionally chose to focus on subjects that embody positivity and tranquility, aiming to uplift both mind and spirit. Whenever I seek solace, I find these images bring a touch of sunshine, even on the rainiest of days.
marianne.moore@btinternet.com



Jane Oldfield
PEOPLE IN PLANE £50
giclée print, framed 33 x 43cm

I made this digital print from photographs of clouds and from my original pen drawings based on sketches at air terminals. Later I developed this work into a cutout of a whole passenger jet which I used in a performance.
jane@janeoldfield.co.uk



John Potter
THE DANCE £1500
acrylic on canvas, 90 x 120cm

This painting derives from the well-used drawing compositional exercise of taking the line for a walk but in this painting I have taken the line for a dance. The image is transversed by only painting the negative space with a reduced palette of white to create a calming influence.
johnpotter101@hotmail.com



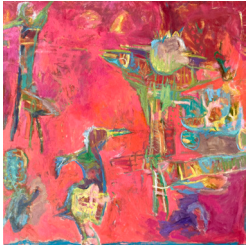
Ryszard Rybicki
WINTER IN YORKSHIRE £1690
oil on canvas, framed 82 x 112cm

The painting is the memory of my journeying across Yorkshire. I was chief artist exploring British Chinese workforce heritage. Travelling in a van I took in the passing landscape and loved the rhythm of the land revealing its raw beauty in cold, freezing temperatures.
ryszardart@gmail.com



Sanja Stamenic
WHERE IS THIS BOAT HEADING? £NFS
digital print, framed 51 x 51 cm

The digital prints and collages are based on my surreal drawings. I depict the imaginary world of the subconscious and visionary inner narratives.
stamenic@yahoo.com



Felicity Swan
HIGH AMONG THE BEAKS £1350
oil on canvas, framed 100 x 100cm

As much as I look for form through colour and line, my search is also for breathing space. My painting rhythm involves a process of blocking out, scraping back and working in, and here easing intense colouration with calming tones.
felicity@felicityswan.com



Greta Wakil
LANDSCAPE MIRAGE £300
oil on canvas, 45 x 60cm

The starting point for this painting came from walking in the countryside with its beautiful light and shadows, and wonderful colours. I try to express what I have seen and felt with what I imagine. To paint is to celebrate life and our beautiful world.
gretawakil@yahoo.co.uk



Celia Toler
CONSTRUCTION DRAWINGS 1-6 £NFS
clockwise from top left:
1. Falling, 2. Beach, 3. Hitting the Buffers,
4. Slippage, 5. Guest Bedroom,
6. Boxes Don't Behave
pastel on paper, 100 x 70cm

Influenced by the drawings of Phyllida Barlow, the process of making 3D elements perform became absorbing while the colours defined tops and sides. Finally stories began to emerge.
celiatoler@hotmail.com



Miles Watson
REVOLVER £1000
oil on canvas, 65 x 75cm

This is an expressionistic work whose theme on the cycle and dynamism of life is expressed through its circular composition. The fresh colours and bird-like forms help give the work movement and its light and airy spatial feel.
miles.watson@talk21.com



Astrite Vula
A NEGATIVE £1500
oil on canvas, 100 x 100cm

The Artist and her instrument. Thoughtful movements unfold, melting time away and all its surroundings. Strokes reveal environments in growth and those unfolding perspectives. A voice, buried deep in another's skin.
astritev@gmail.com



Stephen Williams
PILLOW TALK £NFS
galvanised steel, polyester hollowfibre,
reinforcement steels, concrete
140 x 60 x 27cm

This work explores the moral landscape of conflict, questioning the divisive narratives of enemy and ally. It critiques self-righteous justifications for war, highlighting the unpredictability of death and the fragility of life. Ultimately, it prompts reflection on our complicity in human suffering.
swlastword@hotmail.com

RIVERSIDE ARTISTS GROUP

Established in 1986 at Riverside Studios, RAG is a diverse group of up to 40 practicing artists. It is made up of established practitioners, fine art lecturers as well as newcomers and professionals from related disciplines.

RAG's membership uses a wide range of disciplines to develop and progress ideas and produce work that spans contemporary visual art forms. With notable past national and international exhibitions, RAG continues to show regularly in real life, alongside an active online presence. Profiles of RAG artists can be found on the website.

New members are welcome and are chosen by a selection panel. Exhibitions are organised by volunteer working groups. RAG is a not-for-profit organisation.

For more information, please see:

RIVERSIDEARTISTSGROUP.COM



The Polish Social and Cultural Association (POSK) in Hammersmith, London, was founded by the Polish community in Great Britain on the initiative of Professor Roman Ludwik Wajda (1901-1974). In 1964 the first public meetings took place to discuss the idea of collecting funds to build the Centre.

POSK's motto is "For the benefit of Poland and free Poles." It was also created to save and maintain the Polish Library, established in 1942, in London. POSK is run by volunteers and hosts numerous exhibitions, meetings, concerts, film screenings and theatre performances.

For more information, please see:

POSK.ORG/EN



RAG

www.riversideartistsgroup.com
All images © The Artists
© Riverside Artists Group, 2024